

FIRST WE HAD THE 'THIRD WORLD', THEN THE 'DEVELOPING WORLD' AND NOW THE 'GLOBAL SOUTH'. WHICH TERM DO YOU PREFER?

Video interview with Barbara Potthast ([Professor of Iberian and Latin American History, University of Cologne, Germany](#))



Video: <http://gssc.uni-koeln.de/node/475>

WHAT IS THE GLOBAL SOUTH?

Video interview with Boike Rehbein ([Professor of Society and Transformation in Asia and Africa, Humboldt-Universität, Berlin, Germany](#))



Video: <http://gssc.uni-koeln.de/node/477>

THE NEW SOUTH PROJECT

Photographs by Brooke C. White ([Department of Art, University of Mississippi](http://art.olemiss.edu))

The New South Project investigates the ways that identity and place are affected by the economic and technological changes taking place within specific regions of the Global South, such as South Central Asia and the southern United States. Through the use of photography, digital mapping technology and short film animations, *The New South Project* makes transnational comparisons that are crucial for understanding the cultural and geographical impact of globalization on some of the most disadvantaged regions of the world.

Each geographic location in *The New South Project* faces many challenges due to globalization, including for example environmental degradation, displacement, and political instability. This project began in Bangalore, India, known as the “Silicon Valley of India”, where I was a Senior Fulbright Scholar in the fall of 2012. It has grown to include the deep south of the United States and focuses on four common themes that evolved while photographing: Expansion, Cultivated Spaces, Oil and Water. Each one of these themes can be traced throughout regions of India, Mississippi, Louisiana and Alabama, and demonstrate the various ways that the global economic market impacts the landscapes of *The New South Project*.

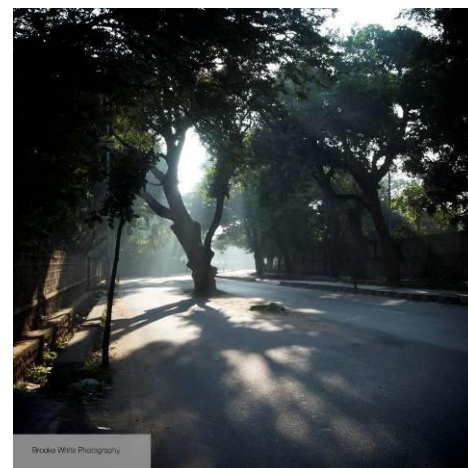
More work of Brooke White:

<http://art.olemiss.edu/2012/07/09/brooke-white/>

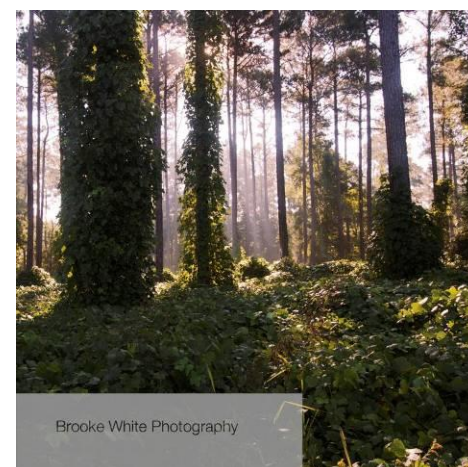
CULTIVATED LANDSCAPES



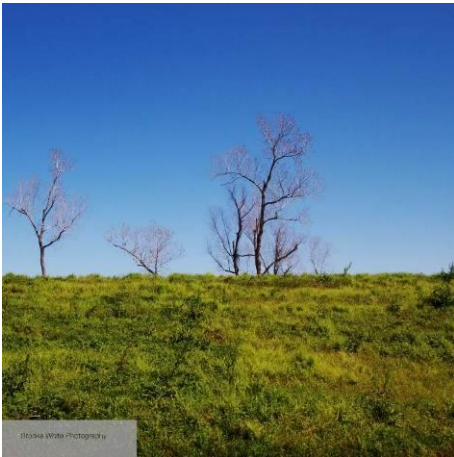
Bangalore Shopping District, Cultivated Landscapes, Archival Pigment Prints, 12”x12”, 2012.



Downtown Bangalore, Cultivated Landscapes, Archival Pigment Prints, 12”x12”, 2012.



Levee, Louisiana, Cultivated Landscapes, Archival Pigment Prints, 12”x12”, 2012

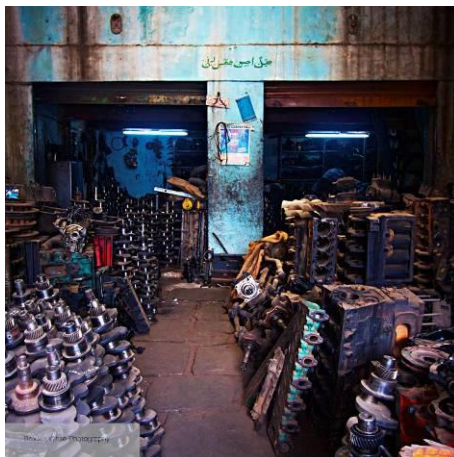


Kudzu, Mississippi, Cultivated Landscapes, Archival Pigment Prints, 12"x12", 2012

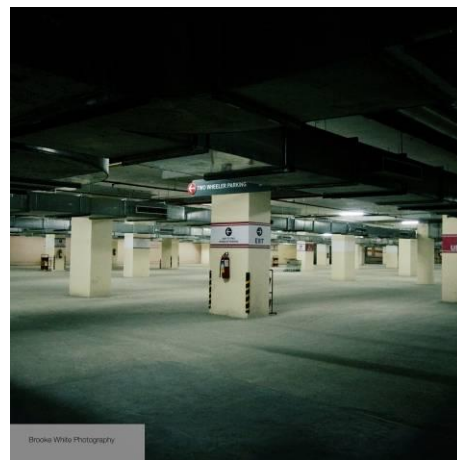


E-city, India, Expansion, Archival Pigment Prints, 12"x12", 2012

EXPANSION

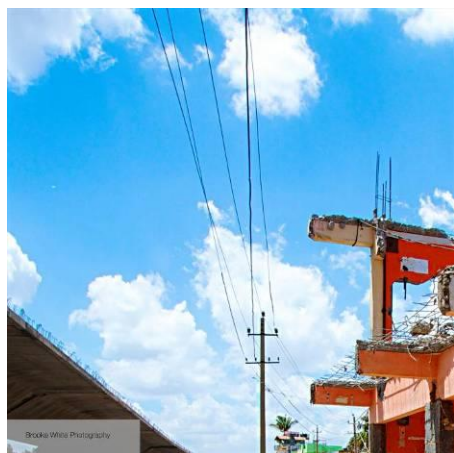


Recycling, India, Expansion, Archival Pigment Prints, 12"x12", 2012



New Mall, India, Expansion, Archival Pigment Prints, 12"x12", 2012

OIL



Flyover, India, Expansion, Archival Pigment Prints, 12"x12", 2012



Oil Refinery, India, Oil, Archival Pigment Prints, 12"x12", 2012



Oil Jack, Mississippi, Oil, Archival Pigment Prints, 12"x12", 2012



Ganesh Aftermath, India, Water, Archival Pigment Prints, 12"x12", 2012



Oil Rig, Louisiana, Oil, Archival Pigment Prints, 12"x12", 2012



I See, India, Water, Archival Pigment Prints, 12"x12", 2012

WATER



Danger, India, Water, Archival Pigment Prints, 12"x12", 2012



Guide Post, Louisiana, Water, Archival Pigment Prints, 12"x12", 2012